

## Technical Notification

This document fully replaces former TN: 95-125031

Date: February - 2007

Document No.: 95-125053

Page<1/12>

### EXPLORER™ SIM Lock feature\_Rev\_2

#### Subject:

This technical notification describes the new SIM lock software feature and how it can be configured for the EXPLORER™ terminals with software version 2.00 or later.

#### Priority:

- LOW: For information purpose only – no direct action needed!

#### Identification:

The EXPLORER™ terminal must have or be upgraded with firmware 2.00 or later and with bootloader version 5.00 or later in order to be able to activate the SIM Lock feature.

#### Action:

The SIM Lock PIN can be ordered from the Thrane & Thrane order office using part number TT-3650A-004.

SIM Lock PIN can be ordered to all EXPLORER™ terminals delivered in the past simply by forwarding the IMEI number and serial number of the EXPLORER™ terminal to which the SIM Lock PIN must apply. The distributor will then receive a SIM Lock PIN code and can manually SIM Lock the EXPLORER™ terminal to any desired IMSI, DP or ISP using the built-in web interface.

The DP and ISP codes are supplied by the Airtime Provider.

SIM Lock PINs can also be purchased together with EXPLORER™ terminals and the EXPLORER™ terminals will then be SIM locked in the production line to a specific DP or ISP specified by the distributor upon order. The EXPLORER™ terminals are then SIM locked when shipped from Thrane & Thrane.

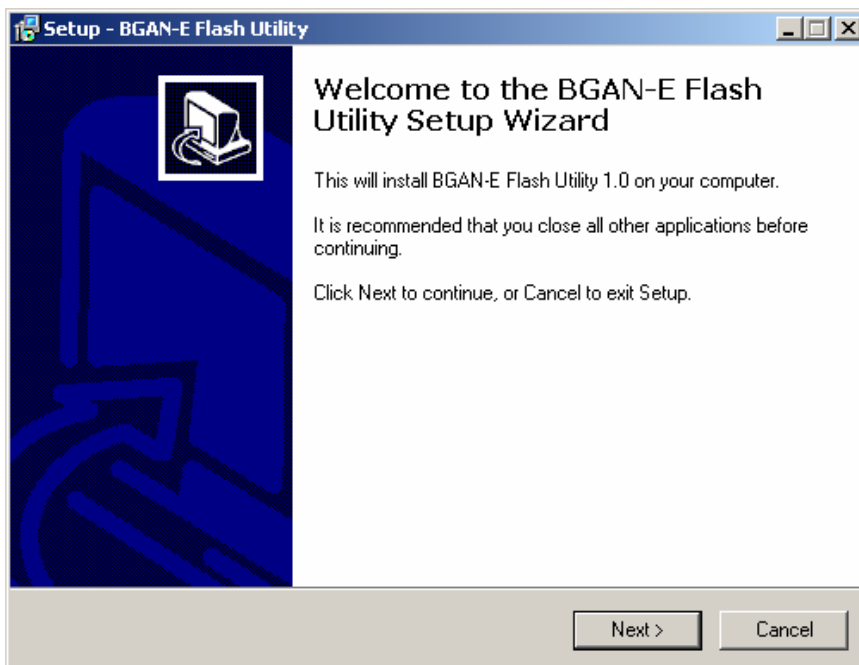
## How to install the BGAN-E Flash Utility

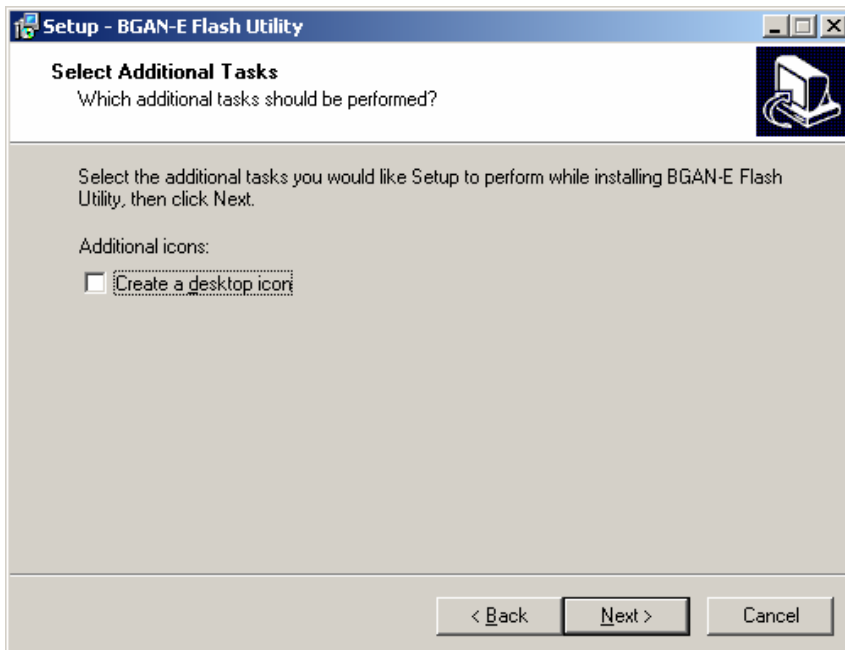
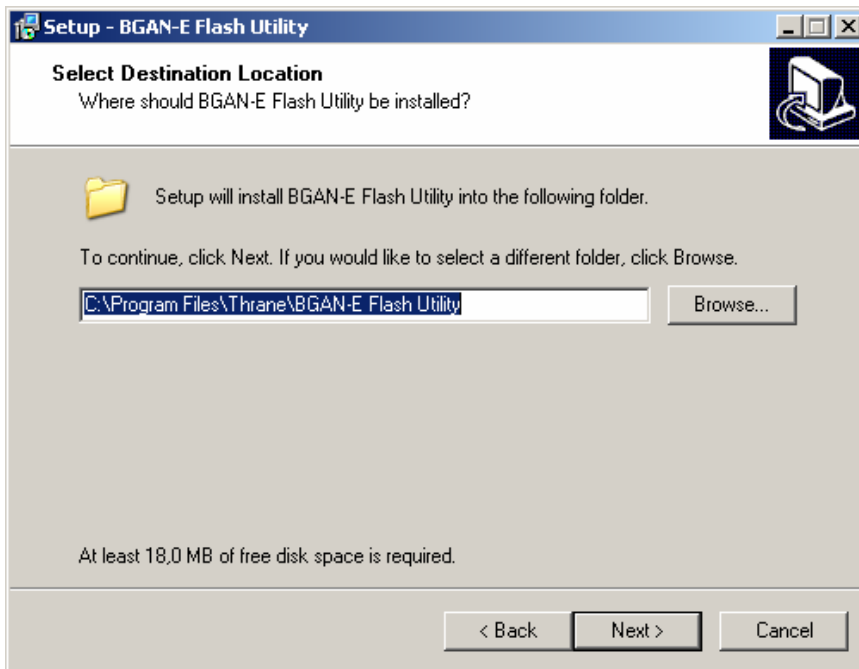
The BGAN-E Flash Utility is the tool for upgrading the bootloader.

1. Download the “bootloader\_500.zip” from eSupport download centre.
2. Install and run the BGAN Explorer (TM) Bootloader Flasher program named “BGAN-E\_Flash\_setup.exe”

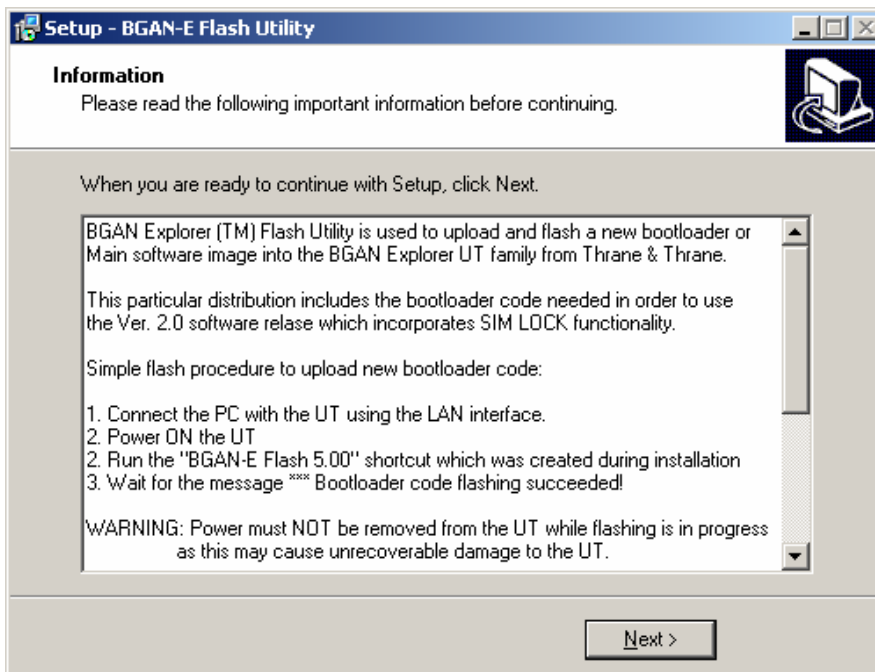
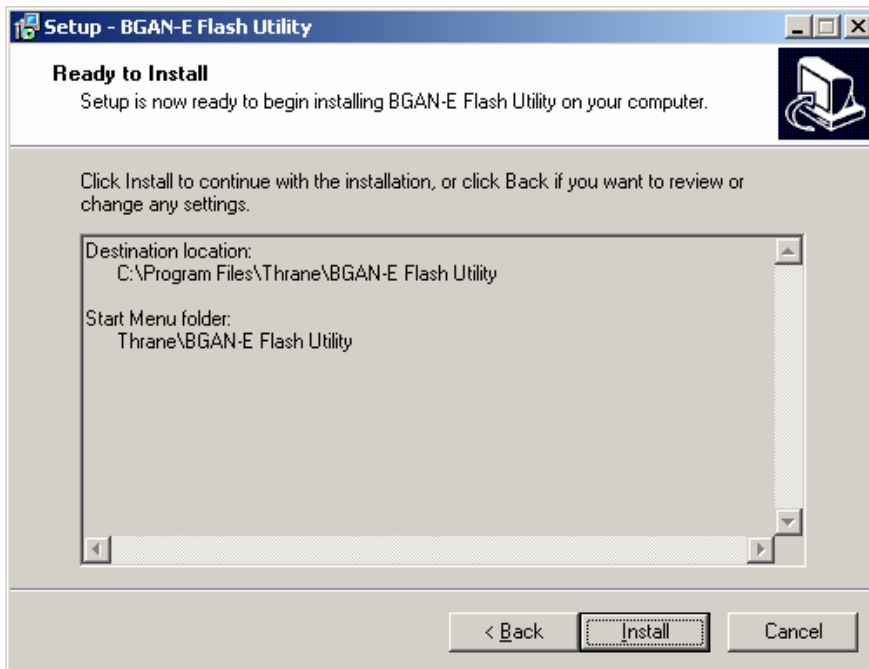
**Pc must run Windows XP sp II.**

3. Install the program by following the wizard





4. Do not create a desktop icon.





5. Installation is finished. The program is now located in "Programs\Thrane\BGAN-E Flash Utility"

## Upgrading to Bootloader: 5.00 build 731

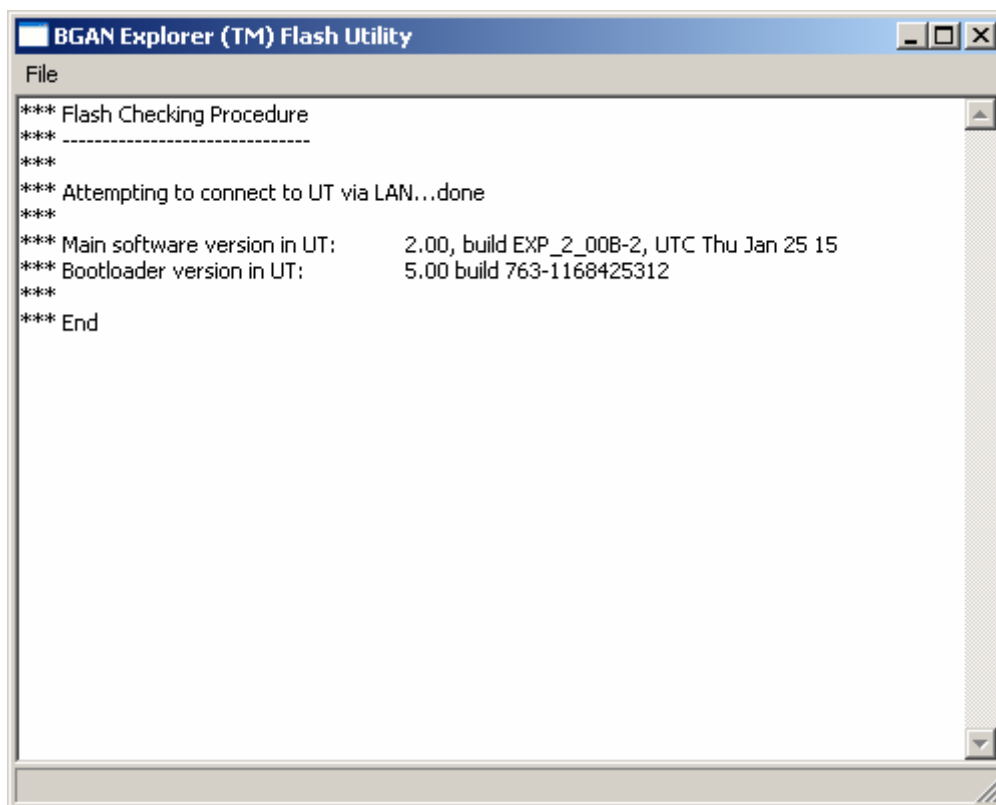
**NOTE: It is NOT recommended to upgrade bootloader if SIM Lock feature are NOT to be used!!**

**Before upgrading the bootloader, check that the firmware is version 2.00 or higher. If not, update the firmware to latest version.**

**This is mandatory!!**

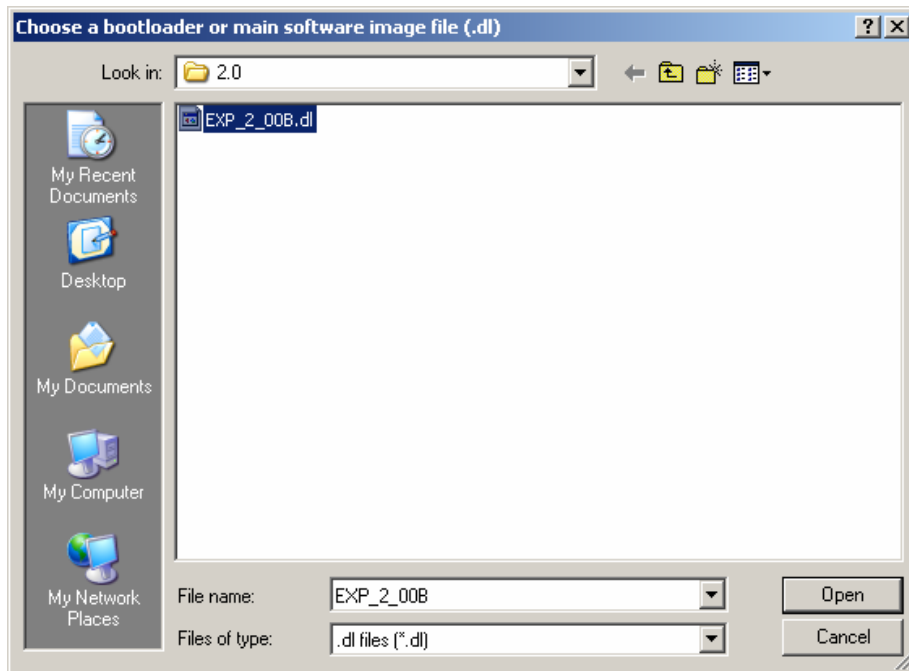
**Power must NOT be removed doing the upload.**

1. Connect to the Explorer™ terminal via the Ethernet interface.  
Run the BGAN Flash Utility, located in “Programs\Thrane\BGAN-E Flash Utility”
2. Check main software version by selecting “File-Check”

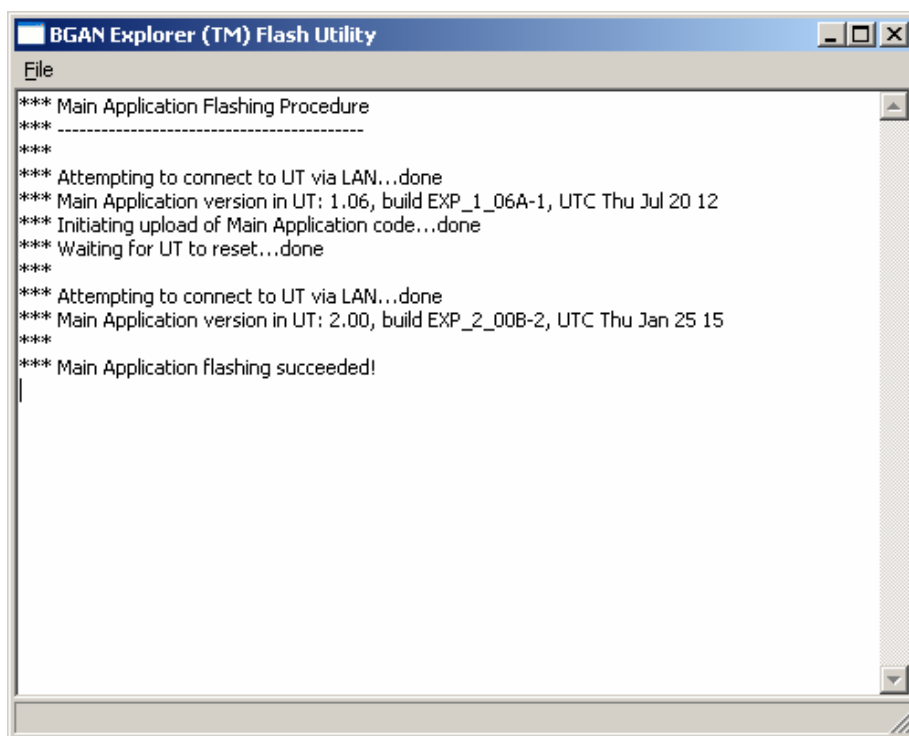


3. IF the main software version IS NOT 2.00 or higher, upload to latest version of main software.  
If main software version is 2.00 or higher go to section 7.

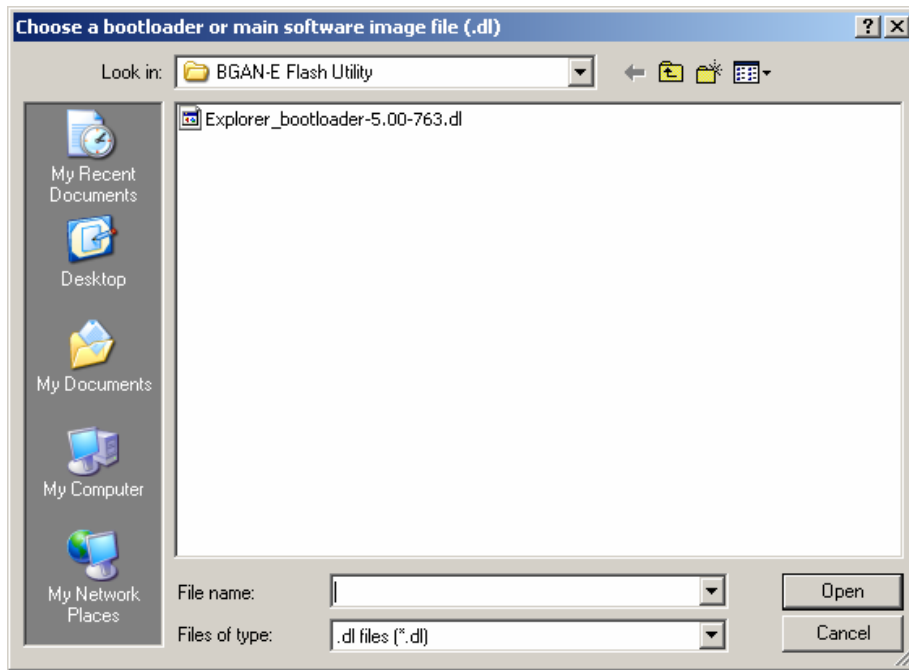
4. Uploading main software can be done from the BGAN-E Flash utility, by selecting “File-Flash”
5. Locate the main software on the HD (in this case EXP\_2\_00B.dl)



6. Select “Open”, and wait for the software to be uploaded.



7. To upload the Bootloader open BGAN-E Flash Utility, select “File-Flash”, and locate the bootloader. C:\Program Files\Thrane\BGAN-E Flash Utility



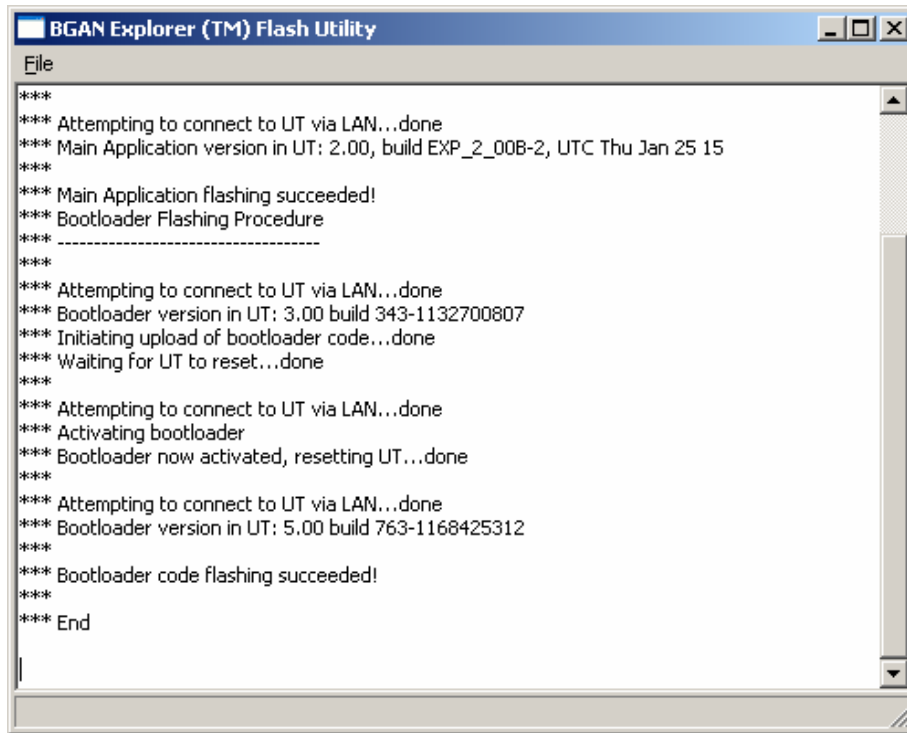
8. Select the Explorer\_bootloader-5.00-763.dl and “Open”



9. Select “OK”



10. Wait for the bootloader to be uploaded.

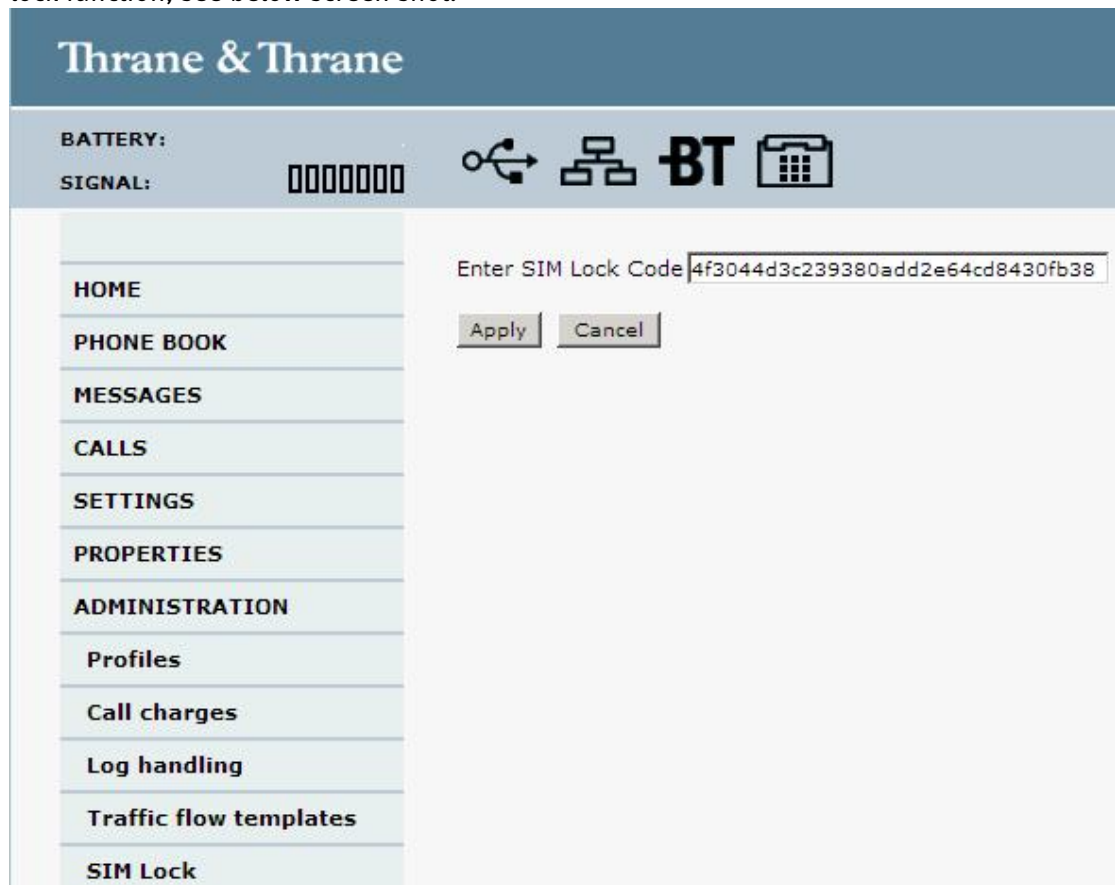


```
File
***
*** Attempting to connect to UT via LAN...done
*** Main Application version in UT: 2.00, build EXP_2_00B-2, UTC Thu Jan 25 15
***
*** Main Application flashing succeeded!
*** Bootloader Flashing Procedure
*** -----
***
*** Attempting to connect to UT via LAN...done
*** Bootloader version in UT: 3.00 build 343-1132700807
*** Initiating upload of bootloader code...done
*** Waiting for UT to reset...done
***
*** Attempting to connect to UT via LAN...done
*** Activating bootloader
*** Bootloader now activated, resetting UT...done
***
*** Attempting to connect to UT via LAN...done
*** Bootloader version in UT: 5.00 build 763-1168425312
***
*** Bootloader code flashing succeeded!
***
*** End
```

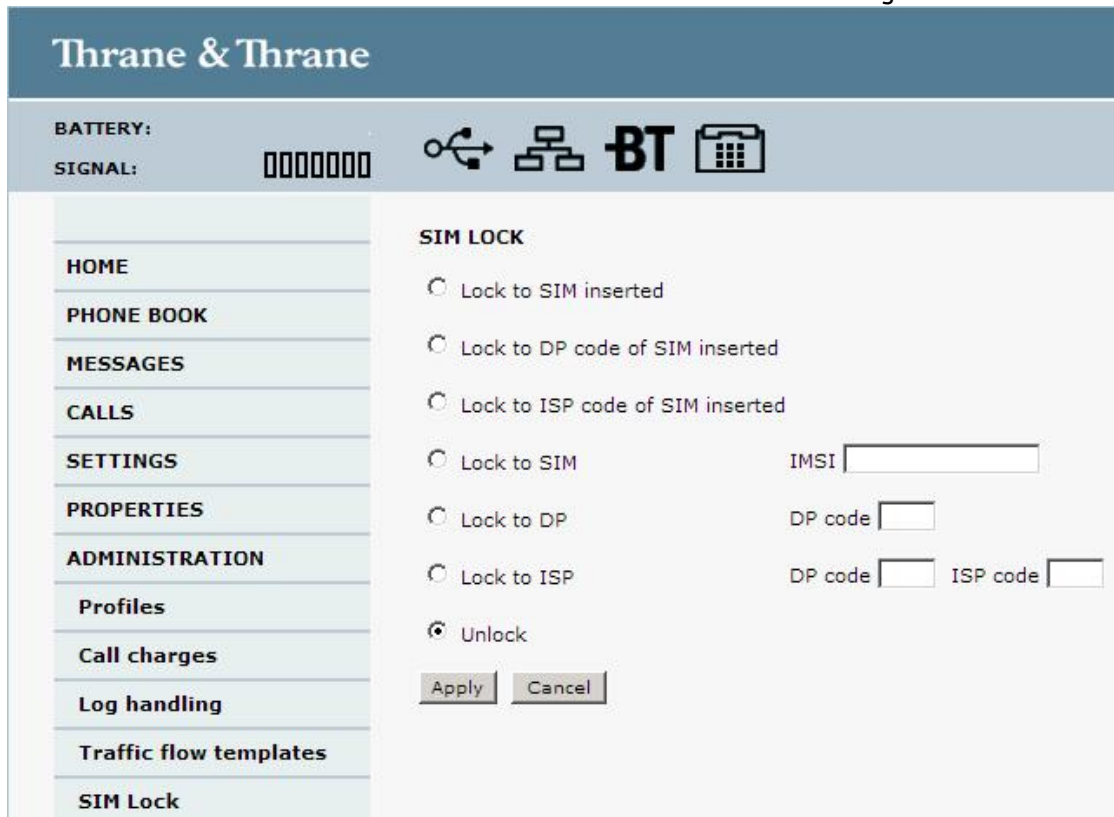
11. The bootloader has been uploaded and the terminal is now ready for the SIM Lock function.

## How to SIM lock EXPLORER™ from the built-in web interface:

- 1) Connect a PC with a LAN cable to the EXPLORER™ LAN interface.
- 2) Boot up the PC and EXPLORER™
- 3) Open a web browser and enter the built-in web interface of the EXPLORER™.  
IE: <http://192.168.0.1>
- 4) Go to the ADMINISTRATION menu and login. Default: User: admin Pass: 1234
- 5) Go to the SIM Lock menu and enter the SIM Lock PIN code to get access to the SIM lock function, see below screen shot:



6) Below screen will now be visible and the SIM Lock function can be configured.



NOTE: Remember to reboot the EXPLORER™ in order for the new settings to take effect.

## How to validate if EXPLORER™ is SIM locked correct:

### USING THE WEB INTERFACE:

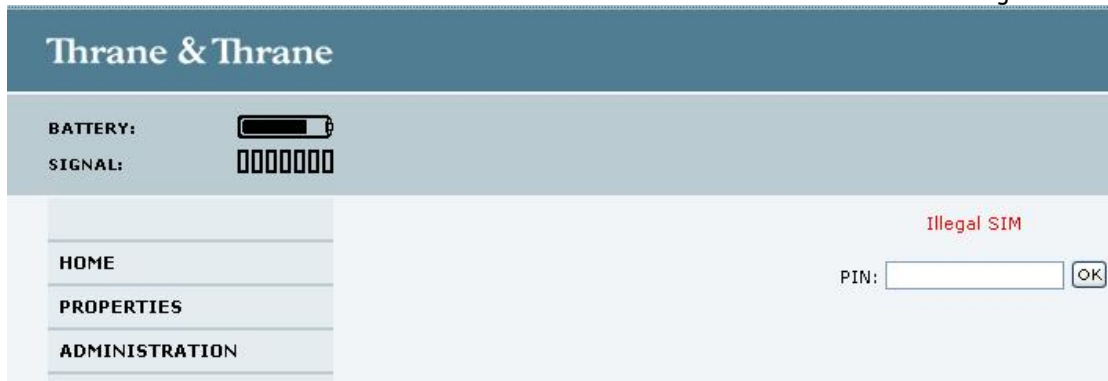
Insert the SIM card in the EXPLORER™.

Connect a PC to the LAN interface of the EXPLORER™.

Power up the PC and EXPLORER™ and go in to the built-in web interface.

If the SIM card is valid the normal web interface will appear.

If the SIM card is Invalid then the web interface will show a limited menu and write the message "Illegal SIM". See below picture:



## USING THE LCD MMI:

Insert the SIM card in the EXPLORER™ and power it up.

Using the LCD MMI, there are two different procedures to validate if the EXPLORER™ is SIM locked correctly. The procedure depends on if the PIN for SIM is enabled or disabled in the EXPLORER™.

If PIN is disabled (default from factory), it is necessary to point the EXPLORER™ towards an Inmarsat I4 satellite and press OK to the signal level strength.

If the SIM card is valid the EXPLORER™ will start registration procedure.

If the SIM card is Invalid the LCD will show the text "ILLEGAL SIM". See below LCD MMI:



If PIN is enabled, it is necessary to enter the 4-8 digit PIN for the SIM.

If the SIM card is valid the LCD MMI will show the signal strength in pointing mode.

If the SIM card is Invalid the LCD MMI will show the text "ILLEGAL SIM". See below LCD MMI:



Thrane & Thrane  
After Sales Service

*Information in this document is subject to change without notice  
and does not represent a commitment on the part of Thrane & Thrane A/S.*

*© 2007 Thrane & Thrane A/S. All rights reserved.*

*Printed in Denmark.*