



STARBLUE IR series
Satellite Bluetooth Data Kits

Quick User Guide v1.03

STARBLUE IR - QUICK USER GUIDE

1x USB **Class 1 BT** Data Adapter (for Computer) 1x Stubby Antenna
1x Serial Adapter dongle 1x 12V DC Power Cable
1x USB Adapter extension cable 1x Quick User Guide & CD

CONTENTS

Section Reference

Page 2

1. Overview
2. **StarBlue IR** Series Package Contents and Model Application
3. Installing the USB Bluetooth Adapter to your computer
4. Installing **StarBlue IR** to Satellite Devices
5. Pairing **StarBlue IR** & USB Bluetooth Adapter (Windows XP SP2 Bluetooth Stack)

Section 1

Overview

These instructions will take you only to the point of where you need to consult the IRIDIUM DATA instructions to successfully set up a modem on your Laptop for your Satellite Telephone Device.

Bluetooth™ is a low-power wireless networking standard which uses short radio waves to allow electronic devices to communicate with each other without using cables.

The following is supported by the **StarBlue IR** Series based on Bluetooth™ technology:

- Connect IRIDIUM Satellite Devices wirelessly to a Computer.
- Dial up to the Internet on your computer over your IRIDIUM Satellite Phone to send and receive email, browse the web and access information.
- Initiate a Data Session between IRIDIUM satellite Devices and a computer
- Hardware Requirement: Available USB port.
- Operating System: For PCs: Windows 2000/XP SP2 For Macs: OS X v10.3.9 or later.

Section 2

StarBlue IR Series Package Contents and Model Application

MODEL	HANDHELD SATELLITE TELEPHONE- CONTENTS OF KIT
StarBlue IR-H2	For all 9505a & 9505 Satellite phones (optional IRIDIUM DATA-KIT required) 1x StarBlue IR-H Class 2 Bluetooth Data Adapter (preconfigured for IRIDIUM) 1x USB Class 1 BT Data Adapter (for Computer) 1x Stubby Antenna 1x Serial Adapter Dongle 1x Clip-on Battery Pack 1x USB Adapter extension Cable 1x Quick User Guide & CD
StarBlue IR-H1	HANDHELD MOBILE, FIXED & DATA – SAME CONTENTS IN ALL KITS For all 9505a & 9505 Satellite phones (optional 1x IRIDIUM DATA-KIT & 1x cigarette lighter adapter required)
StarBlue IR-V	For all Docking Stations, Vehicle, Marine and Installation Kits that accepts the IRIDIUM 9505a and 9505 and / or has DB9 port.
StarBlue IR-F	For all IRIDIUM Satellite Telephone Fixed Voice/Data Units that has DB9 port 1x StarBlue IR Class 1 Bluetooth Data Adapter (preconfigured for IRIDIUM)



THIS DEVICE COMPLIES WITH PART 15 OF THE FCC RULES.

Operation is subject to the user accepting responsibility and liability for the following conditions;
(1) The user of this device and others in close proximity may experience and suffer health problems because of harmful interference, and
(2) The user of this device must accept liability for any interference received or caused to other devices, including interference that may cause undesirable operation resulting in unexpected fees and charges via carrier access whether Terrestrial or Satellite originated..

CAUTION: Changes or modifications not expressly approved by the party responsible for compliance could void the user's authority to operate the equipment.

Trademark Information

StarBlue® is a registered trademark of Pacific Rim USA, Inc.
Iridium® is a registered trademark of Iridium LLC.
Windows® is a registered trademark of Microsoft Corporation.
Bluetooth® is a registered trademark of Bluetooth SIG

Notice to Users

Proper back-up systems and necessary safety devices should be anticipated and utilized to protect against injury, death or property damage due to system failure. Protection against incidental costs or liability arising from the use of this product is the responsibility, of the user and the user holds liability free the manufacturer and/or it's marketing partners any liability or damages incurred by the user.

This device is not approved for use in conjunction with or as connection to any life-support or medical system device or equipment.

Any changes or modifications made to this device without the explicit written approval or consent of Pacific Rim USA Inc will void Pacific Rim USA Inc of any liability or responsibility of injury or loss caused by any malfunction.

Overview

StarBlue is a wireless data adapter based on Bluetooth technology. It enables various Terrestrial and Satellite communication devices and device services to communicate wirelessly throughout the range of 30m ~ 1.2km dependent on StarBlue model, Antenna configuration and environment.

Product Specification

Bluetooth Interface:

Bluetooth v1.1 Class I Level – 18dBm
Profiles – General Access, Serial Port

Working distance:

Default Antenna – Default Antenna up to 100m
Dipole Antenna – Default Antenna up to 150m
Dipole Antenna – Dipole Antenna up to 200m
Patch Antenna – Dipole Antenna up to 400m
Patch Antenna – Patch Antenna up to 1200m

Physical properties:

Dimension (96 x 31 x 16 (mm)
3.8 x 1.2 x 0.6 (in.) Weight 14g

Approvals:

Bluetooth 1.1, FCC(A), CE

Warranty:

3 year Limited Warranty

Configuration: Windows Utility

Diagnostic LED: Status & Power LED

Power: 4V~12V, minimum 150mA
Nominal power consumption of
40mA@9600bps & 72mA@115Kbps

Power supply options:

Power via a standard AC-plug DC-adapter
Power via optional USB power cable
Power via DC power cable adapter.
Power via optional vehicle adapter.

Environmental:

Operating temperature: 0C to 50C
Storage temperature: -20C to 66C
Humidity: 90% Non-condensing

PAGE 7

Section 3

Installing the USB Bluetooth Adapter to your computer

1. To use the Microsoft Bluetooth stack, simply plug in your USB Bluetooth adapter into an available USB port on your computer. Windows XP SP2 will automatically detect the Bluetooth device and install all necessary drivers.
NOTE#1. **ONLY** if the USB adapter does not self -install, then manually install the CD software.
2. Notice the **Bluetooth** icon on your tray bar allows you to perform all Bluetooth operations.
3. Place your cursor over the Bluetooth Icon and double left click.

NOTE#1. Windows XP Service Pack 2 – Bluetooth Stack

If you are running Windows XP with Service Pack 2, you may use the Bluetooth drivers provided by Microsoft. Keep in mind, that this Bluetooth stack has limited Bluetooth profiles support. For more information, please visit the Microsoft website at www.microsoft.com

Section 4

Installing StarBlue IR to Satellite Devices

StarBlue IR-H1 & 2 Handheld Config. (Class 2 Serial Adapter with “clip-on” battery pack)

1. Attach optional IRIDIUM Data-KIT Data to Satellite Telephone.(not supplied)
2. Attach StarBlue Data Adapter to the matching end of the Globalstar Data Cable.
3. Move switch located on side of Battery Pack to “ON” position.
4. Check that Power LED light on StarBlue Adapter is illuminated.
5. Replace two (2) “AA” size batteries if “low battery” light is “on” at rear of battery pack.

StarBlue IR-H1 & IR-V Vehicle Configuration (Class 1 Serial Adapter)

1. (IR-H1 only) Attach optional IRIDIUM Data-KIT to Satellite Telephone.(not supplied)
2. (IR-H1 only) Attach optional cigarette adapter(not supplied).

3. Attach StarBlue Adapter to the matching end of the Serial Port located on Device.
4. Plug in DC power(5-12V only) cable adapter to **StarBlue**.(except H1/ H2 models)
5. Check that Power LED light on **StarBlue** is illuminated

StarBlue IR-F Satellite Fixed Unit Configuration (Class 1 Serial Adapter)

1. Attach StarBlue Adapter to the matching end of the Serial Port located on Device.
2. Plug in DC power(5-12V only) cable adapter to **StarBlue**..
3. Check that Power LED light on **StarBlue** is illuminated

- NOTE#1.** If your Laptop has built-in Bluetooth, this can be used in lieu of the USB adapter.
NOTE#2. Alternate (StarBlue IR) power all models available via optional cigarette lighter adapter.
NOTE#3. Ensure a clear unobstructed view of the sky is maintained for optimum performance of the IRIDIUM Satellite Unit. The desired angle is up to 180 degrees view of the horizon.
NOTE#4. Ensure a clear unobstructed transmission path is maintained between the StarBlue Serial Adapter and your USB Adapter as circumstances allow.
NOTE#5. Prior to fixing permanently in place your Satellite device, and StarBlue Adapter, it is always best to temporarily install and test transmission performance is satisfactory.

Section 5

Pairing StarBlue IR & USB Bluetooth Adapter (Windows XP SP2 Bluetooth Stack)

Below are instructions for pairing using Windows XP SP2 as the operating system. If using another Operating System, please refer to the User Guide for Bluetooth pairing instructions.

Windows XP SP2 Bluetooth Stack Setup and Pairing



Start up your Windows

- > "Start"
- > "Settings"
- > "Control Panel"
- > "Classic View"
(if not already selected at top left of screen)
- > "Bluetooth Devices" (Icon/Symbol)

>"Devices"

>"Add"



Once the StarBlue is powered on and connected.

>"My device is set up and ready to be found. **Check this box.**

>"Next"



Once the "StarBlue" is found.

>"StarBlue"

>"Next"

You will now be asked for the "Passkey"



>"Use the pass key found in the documentation"
Note#

1. The passkey for the StarBlue is found on the label sticker on the back of the StarBlue Adapter.
2. Each StarBlue has it's own unique passkey.
3. Please store or note a copy of your passkey some where secure for later reference if needed.

> Enter this passkey exactly as shown, take care with *UPPER* and *lower* case characters.

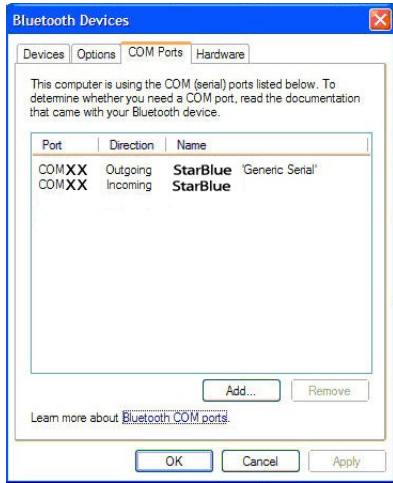
> "Next"



Now the pairing is complete.

IMPORTANT !
Please take note of the "Outgoing COM Port" number

> "Finish"



> “COM Ports” tab.

IMPORTANT !

Note the “Outgoing COM Port” number.

This is the COM port required for any modem installation or software installation asking where the Modem is installed.

You are now ready to install your satellite phone modem or satellite phone software that is required to take advantage of wireless data services.

Please refer to your satellite phone provider user guide for the settings and instructions needed for a successful data setup. (ie. IRIDIUM Direct Internet, Third Party Compression Data Software, Standard Serial Modem Configuration etc.)